

SIDE ENTRY PCB JACK FCC-68



6812 SERIES. Right angle PCB jack.

General Features

- Available in 4/4, 6/4 and 6/6 circuits
- Standard telephone jack FCC-68
- 20.96 mm. height
- Accept standard plugs FCC-68
- Full gold plating with different plating
- 270° plastic foot print

Materials

- Insulator: Thermoplastic UL 94V-0
- Contact: 0.45 mm. round in phosphor bronze
- Operating temperature. -25°C to + 85°C
- RoHS compliant

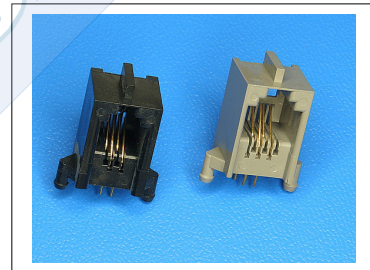
Dimensional Information

Electrical Features

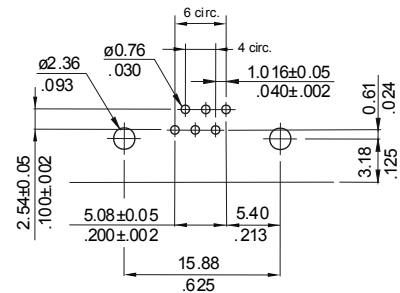
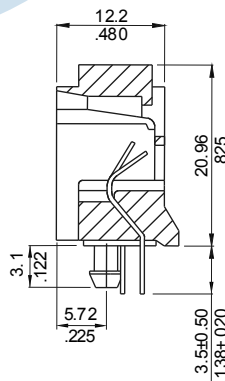
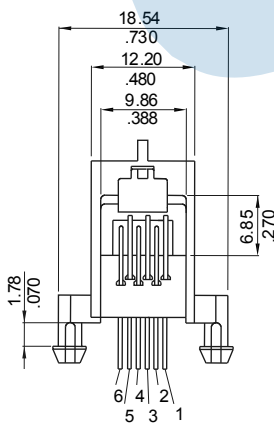
- Voltage rating: < 125V
- Current rating: < 1.50 A
- Contact resistance: < 20 mΩ
- Dielectric withstanding voltage: 300 V AC/minute
- Insulation resistance: >1000 MΩ

Mechanical Features

- Durability: 1000 cycles



Circuit Size	Dimensions			
	6μ"	15μ"	30μ"	50μ"
4/4	6812 - 4441	6812 - 5441	6812 - 6441	6812 - 7441
6/4	6812 - 4641	6812 - 5641	6812 - 6641	6812 - 7641
6/6	6812 - 4661	6812 - 5661	6812 - 6661	6812 - 7661



RECOMMENDED HOLE PATTERN